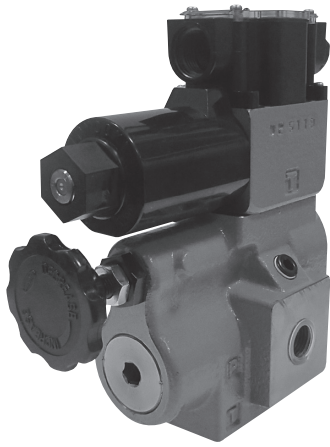


SOLENOID-OPERATED RELIEF VALVE (HRD)



This type of valve consists of a relief valve and a solenoid valve installed at the vent port (VE) of the relief valve, assembled in one unit. It operates as a relief valve and, at the same time, enables unloading operation by opening/closing the vent port.

■Features

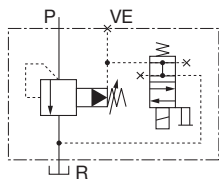
1. Since an oil-immersed solenoid is used the plunger operates in the fluid, alleviating knocking sounds and ensuring quiet valve operation.
2. External oil leakage is eliminated, even after a long time in use, since the valve has no sliding seal parts.
3. Wiring work is simplified.
4. Dust- and water-proof levels are IP65 in accordance with IEC standards.
5. A grounding terminal is standard equipment (AC only).
6. Permissible back pressure considerably increased.
7. A shockless valve that reduces the surge pressure generated at unloading is standard.
8. Surge killer is standard equipment.
9. CE compatible product

B

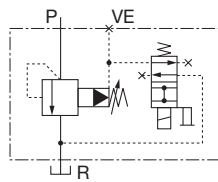
PRESSURE CONTROL VALVES

Without Shockless Valve

Normally-open Type

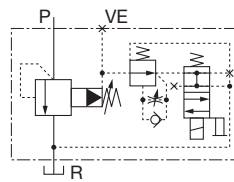


Normally-closed Type

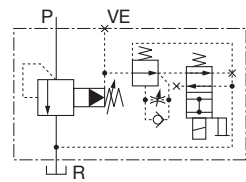


With Shockless Valve

Normally-open Type



Normally-closed Type



●Solenoid valve model

For normally-open type

AC100 V: HRD3-1-B-WYR1-P

AC200 V: HRD3-1-B-WYR2-P

DC24 V: HRD3-1-B-WYD2-P

For normally-closed type

AC100 V: HRD3-2-B-WYR1-P

AC200 V: HRD3-2-B-WYR2-P

DC24 V: HRD3-2-B-WYD2-P

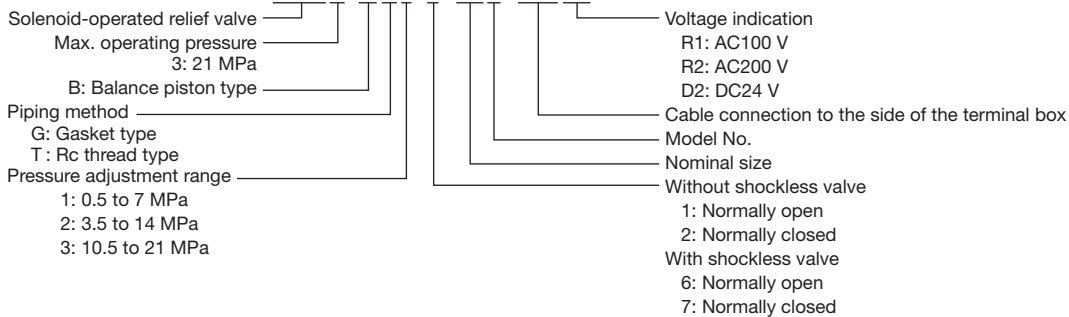
●For the solenoid characteristics, refer to page C-6.

●The maximum permissible back pressure at the R port is 7 MPa or less.

●If subplate SHR**-*T*(A) is necessary, please order one separately.

■Description of the model designation

HRD3-BG1-1-04B-WYR1

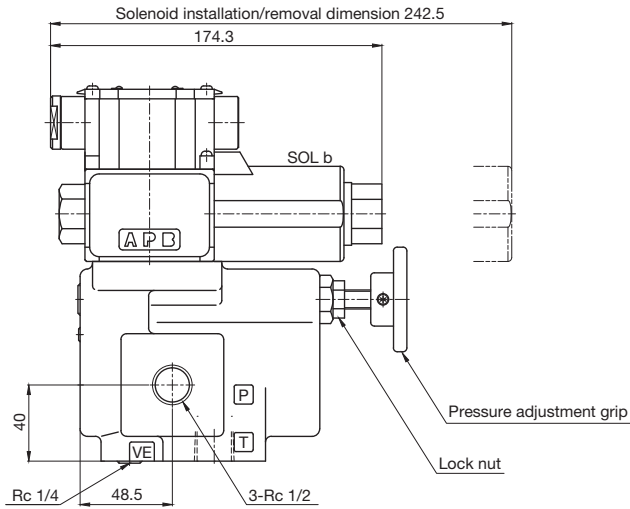
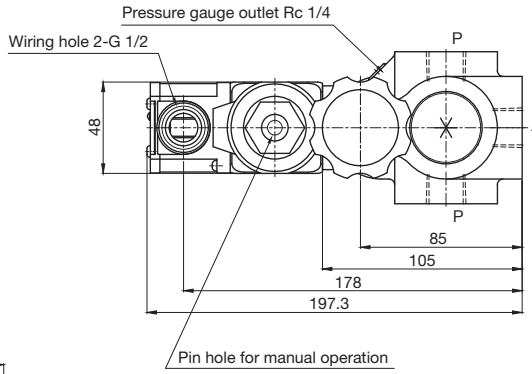
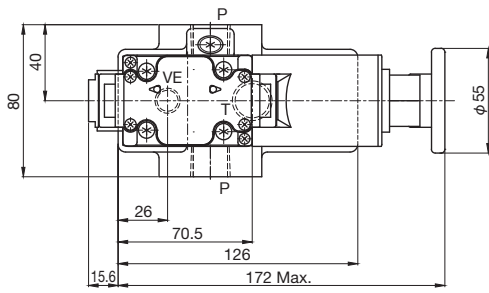


■Specifications

Nominal size	Rated flow rate (L/min)	Max. operating pressure (MPa)	Pressure adjustment range (MPa)	Model	
				Thread type	Gasket type
04	40	21	1: 0.5 to 7	HRD3-BT*-*-04B-WY**	HRD3-BG*-*-04B-WY**
06	120		2: 3.5 to 14		
			3: 10.5 to 21	HRD3-BT*-*-06B-WY**	HRD3-BG*-*-06B-WY**

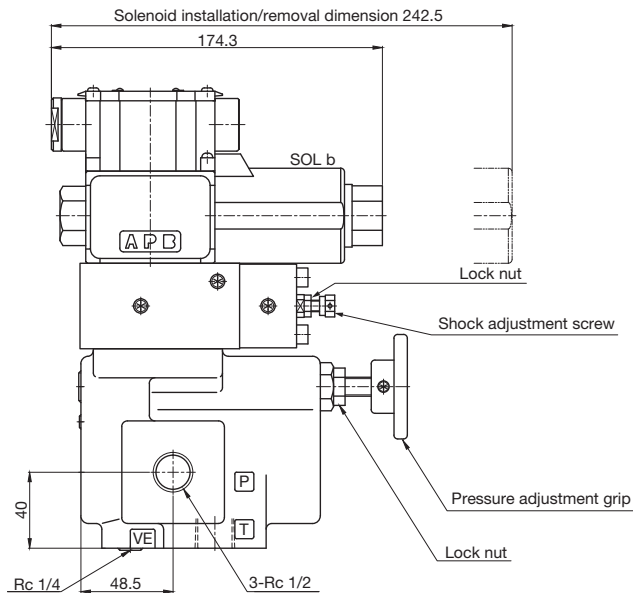
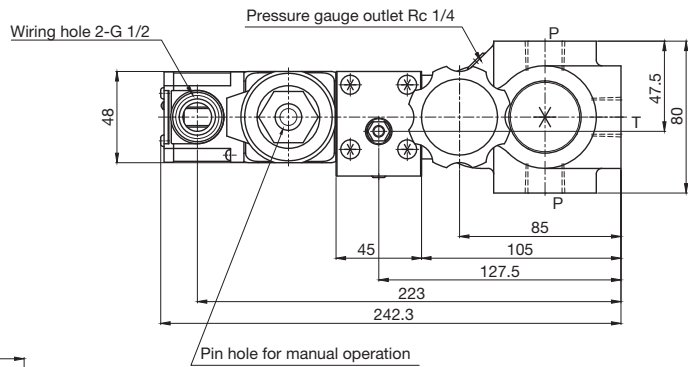
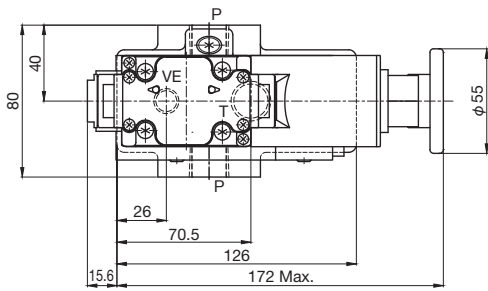
■ Outside dimensions

HRD3-BT⁺- $\frac{1}{2}$ -04B-WY^{**}



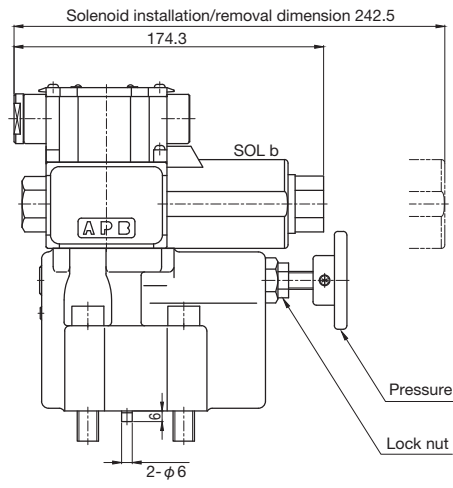
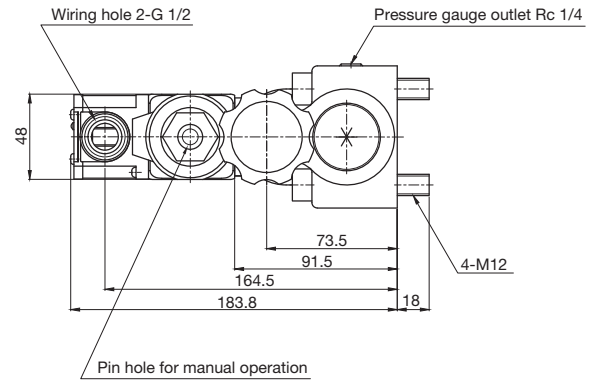
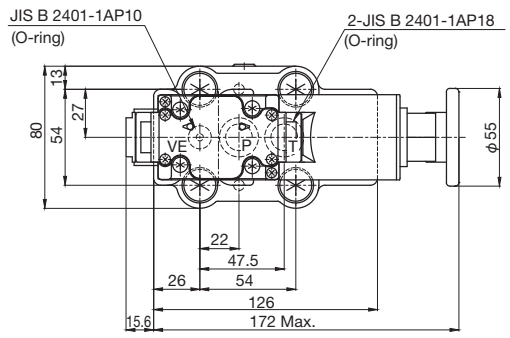
Mass: 5.5kg

HRD3-BT⁺- $\frac{6}{7}$ -04B-WY^{**}



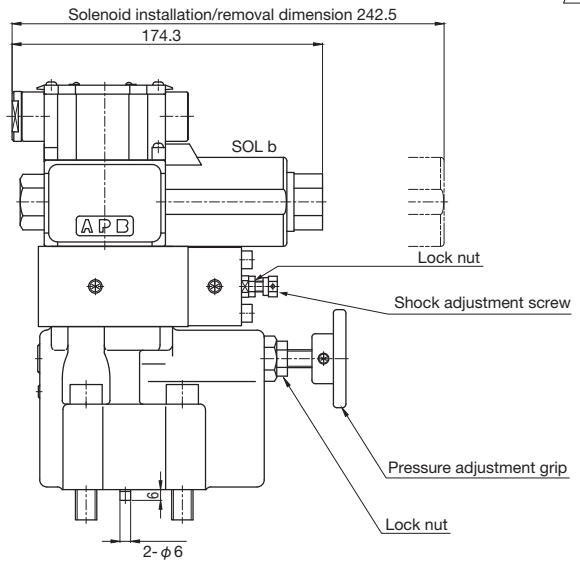
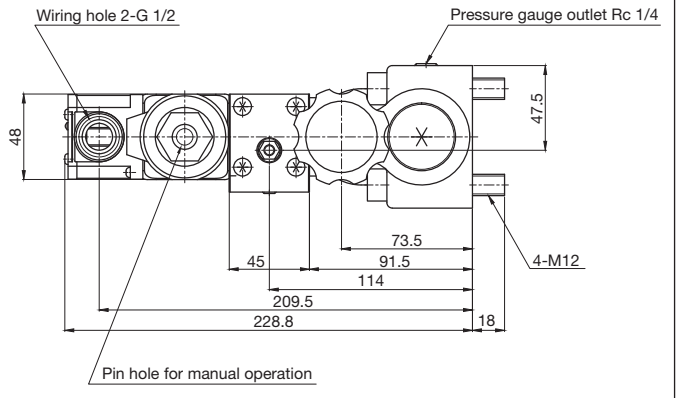
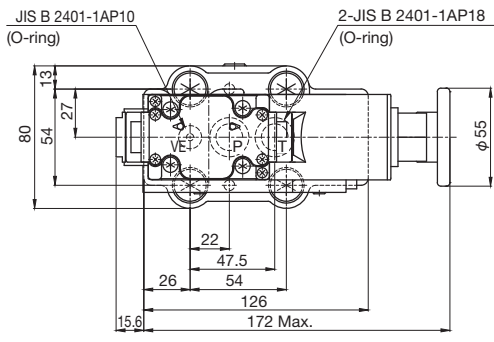
Mass: 6.8kg

HRD3-BG⁺- $\frac{1}{2}$ -04B-WY**



Mass: 5.9kg

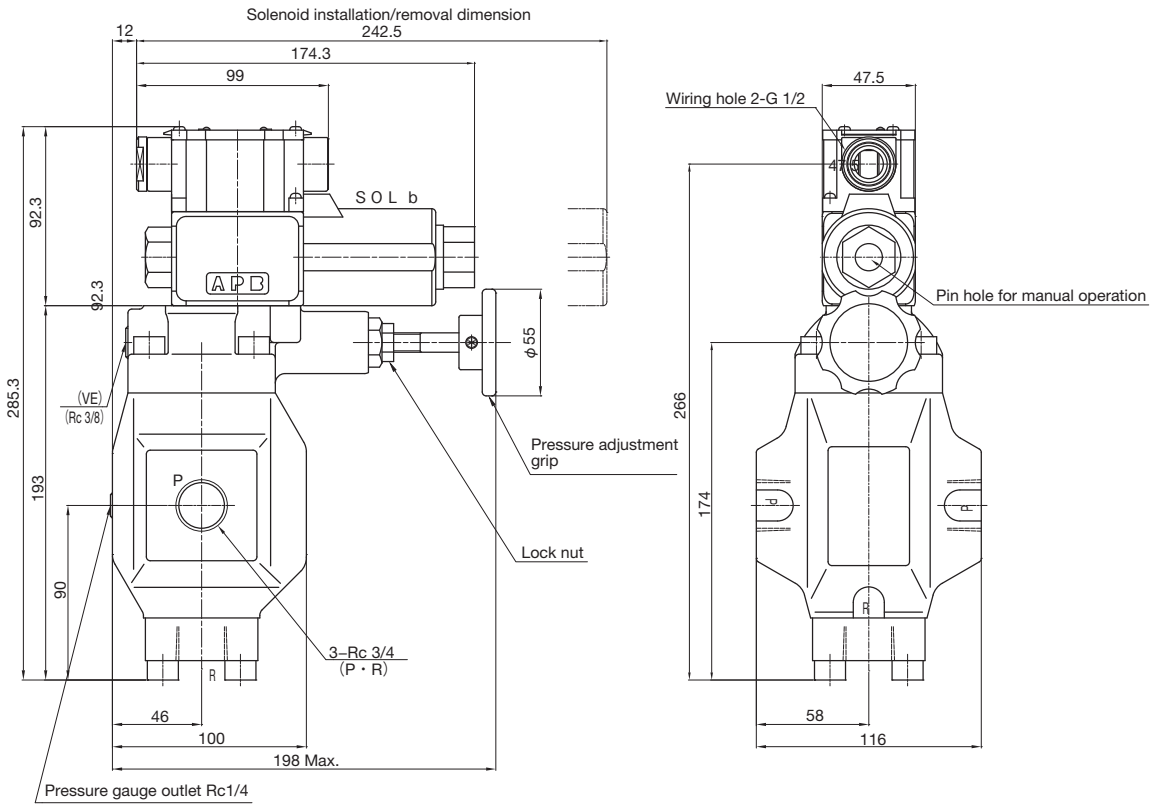
HRD3-BG⁺- $\frac{6}{7}$ -04B-WY**



Mass: 7.2kg

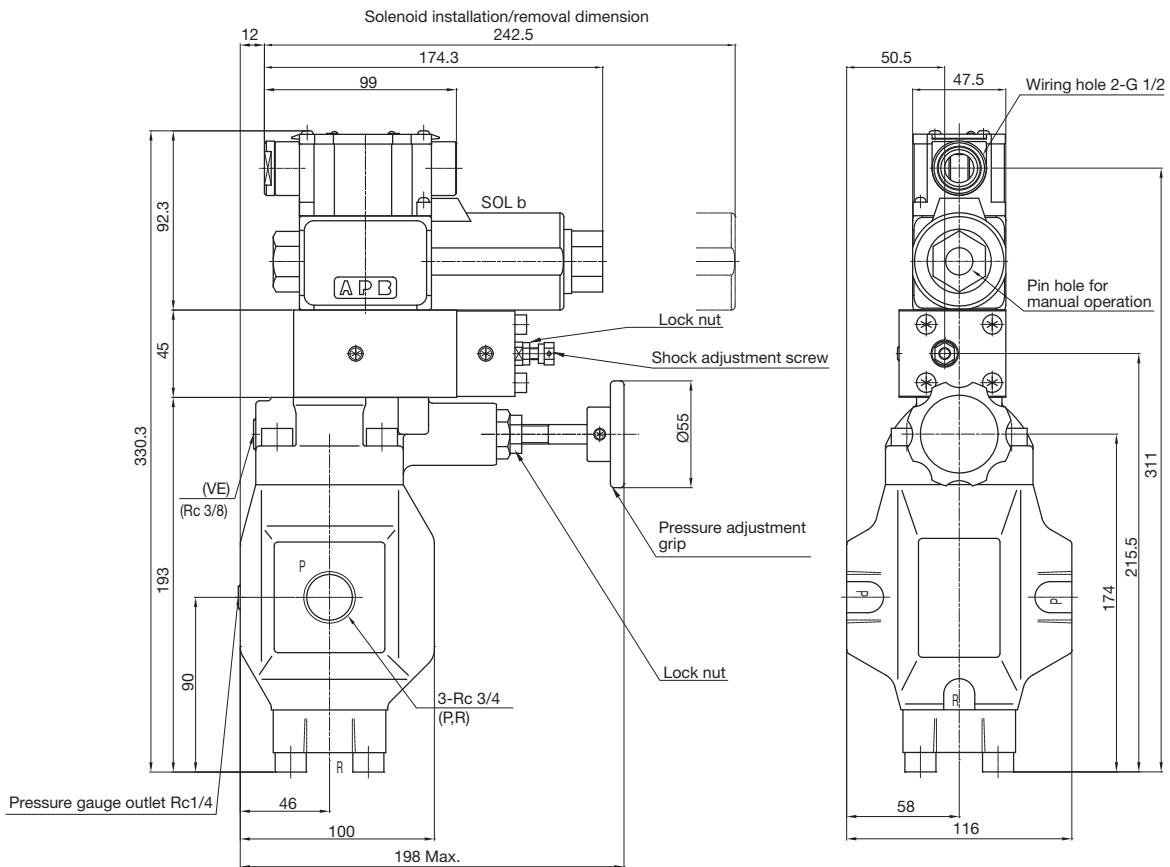
■ Outside dimensions

HRD3-BT⁺- $\frac{1}{2}$ -06B-WY^{**}



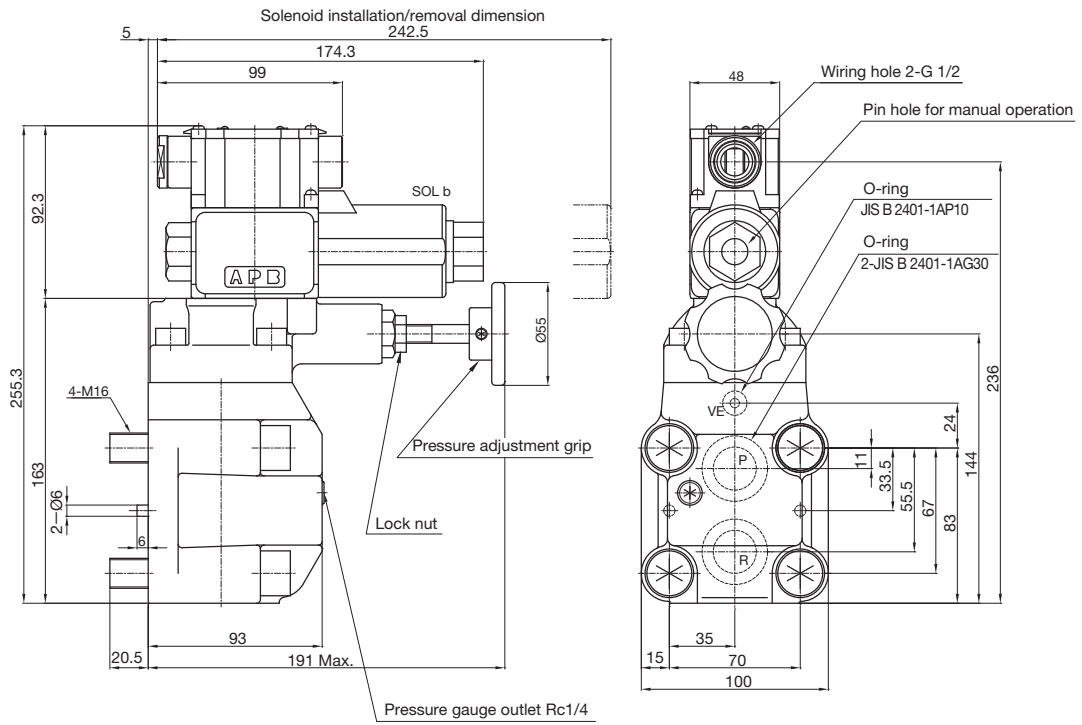
Mass: 9.8kg

HRD3-BT⁺- $\frac{6}{7}$ -06B-WY^{**}



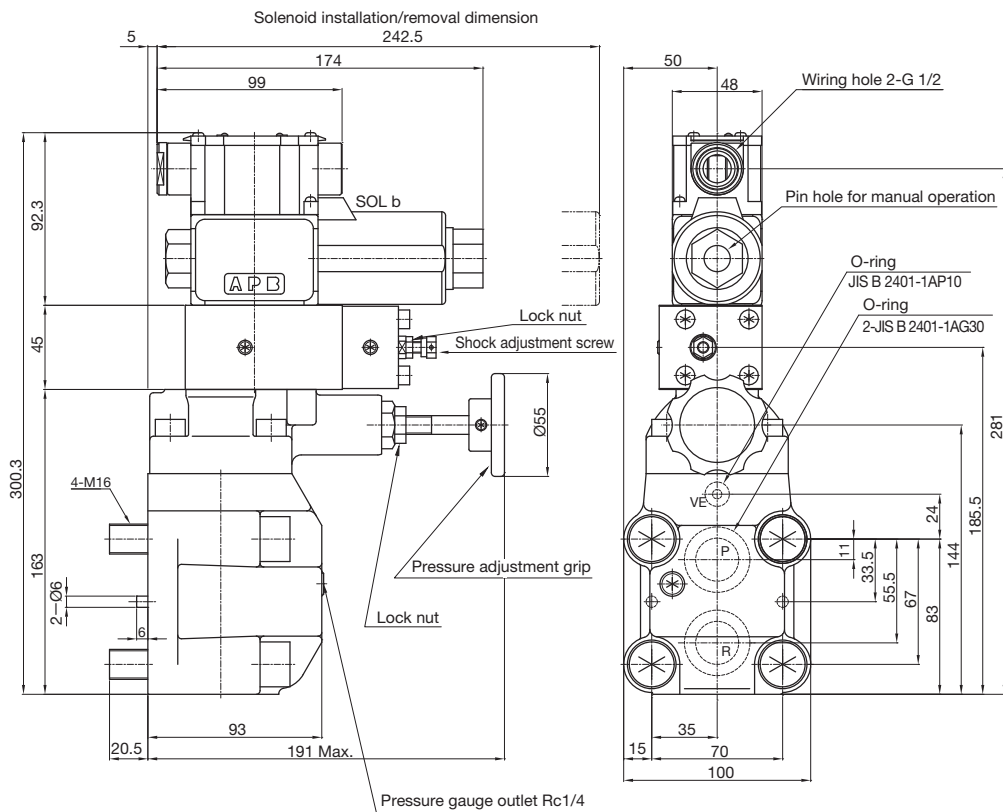
Mass: 11.1kg

HRD3-BG⁺- $\frac{1}{2}$ -06B-WY**



Mass: 9.1kg

HRD3-BG⁺- $\frac{6}{7}$ -06B-WY**



Mass: 10.4kg



PRESSURE CONTROL VALVES